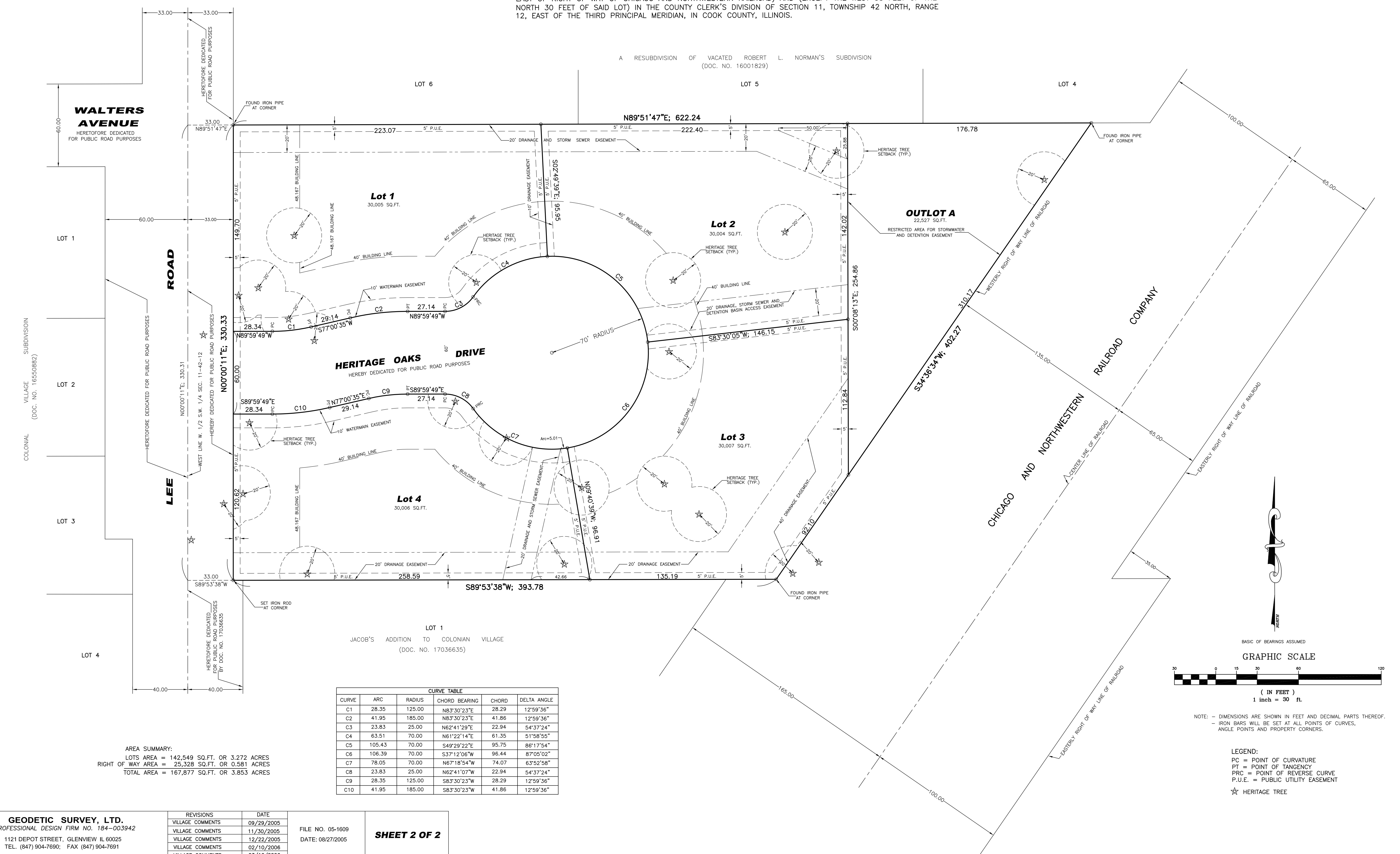


FINAL PLAT OF **HERITAGE OAKS SUBDIVISION**

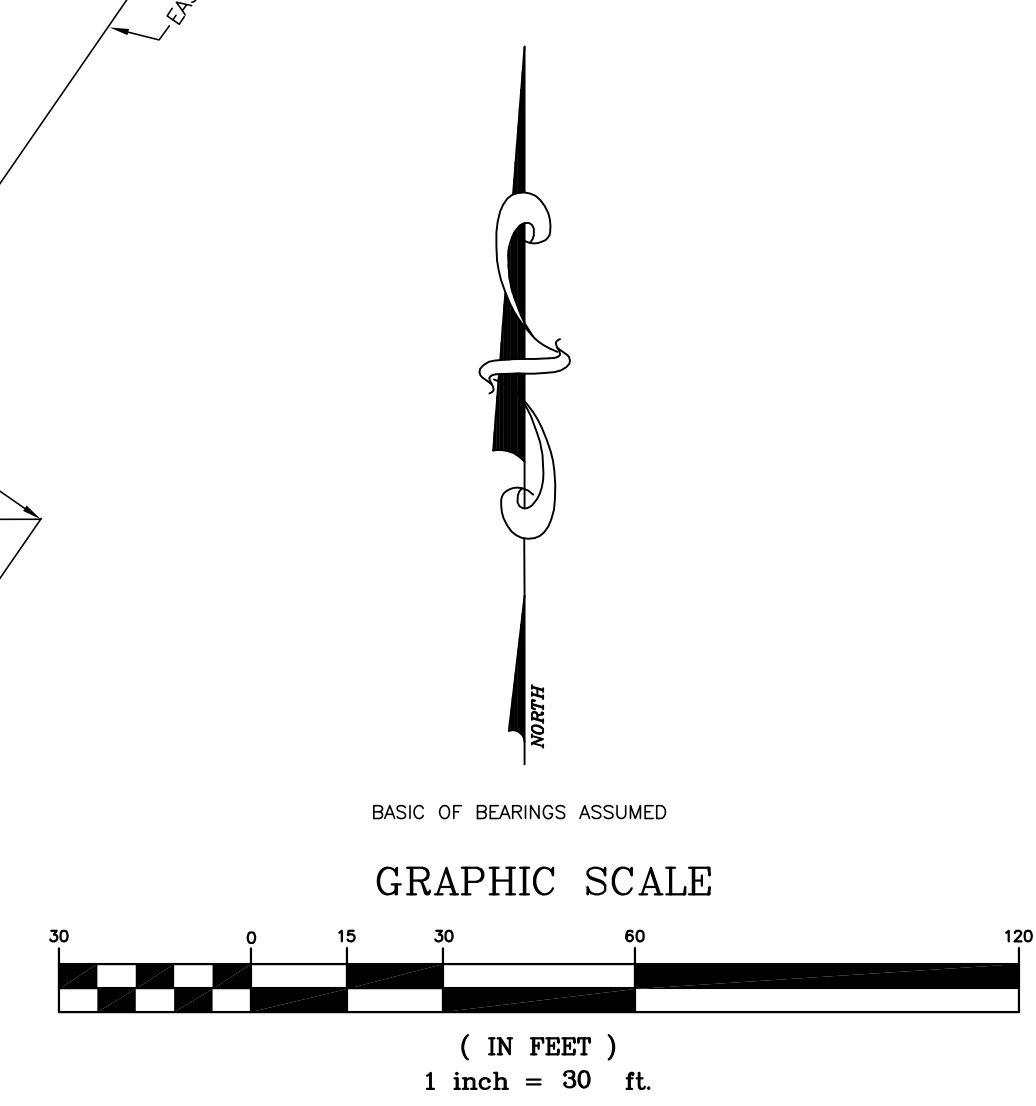
BEING A SUBDIVISION OF LOT 30 (EXCEPT RAILROAD RIGHT OF WAY) AND (EXCEPT THAT PART OF LOT 30 LYING EAST OF RIGHT OF WAY OF CHICAGO AND NORTHWESTERN RAILROAD) AND (EXCEPT THE WEST 33 FEET OF THE NORTH 30 FEET OF SAID LOT) IN THE COUNTY CLERK'S DIVISION OF SECTION 11, TOWNSHIP 42 NORTH, RANGE 12, EAST OF THE THIRD PRINCIPAL MERIDIAN, IN COOK COUNTY, ILLINOIS.

A RESUBDIVISION OF VACATED ROBERT L. NORMAN'S SUBDIVISION
(DOC. NO. 16001829)



CURVE TABLE					
CURVE	ARC	RADIUS	CHORD BEARING	CHORD	DELTA ANGLE
C1	28.35	125.00	N83°30'23"E	28.29	12°59'36"
C2	41.95	185.00	N83°30'23"E	41.86	12°59'36"
C3	23.83	25.00	N62°41'07"E	22.94	54°37'24"
C4	63.51	70.00	N61°22'14"E	61.35	51°58'55"
C5	105.43	70.00	S49°29'22"E	95.75	86°17'54"
C6	106.39	70.00	S37°12'06"W	96.44	87°05'02"
C7	78.05	70.00	N67°18'54"W	74.07	63°52'58"
C8	23.83	25.00	N62°41'07"W	22.94	54°37'24"
C9	28.35	125.00	S83°30'23"W	28.29	12°59'36"
C10	41.95	185.00	S83°30'23"W	41.86	12°59'36"

AREA SUMMARY:
 LOTS AREA = 142,549 SQ.FT. OR 3.272 ACRES
 RIGHT OF WAY AREA = 25,328 SQ.FT. OR 0.581 ACRES
 TOTAL AREA = 167,877 SQ.FT. OR 3.853 ACRES



NOTE: - DIMENSIONS ARE SHOWN IN FEET AND DECIMAL PARTS THEREOF.
 - IRON BARS WILL BE SET AT ALL POINTS OF CURVES,
 ANGLE POINTS AND PROPERTY CORNERS.

LEGEND:
 PC = POINT OF CURVATURE
 PT = POINT OF TANGENCY
 PRC = POINT OF REVERSE CURVE
 P.U.E. = PUBLIC UTILITY EASEMENT
 ☆ HERITAGE TREE

GEODETIC SURVEY, LTD.
 PROFESSIONAL DESIGN FIRM NO. 184-003942
 1121 DEPOT STREET, GLENVIEW IL 60025
 TEL. (847) 904-7690; FAX (847) 904-7691

REVISIONS	DATE
VILLAGE COMMENTS	09/29/2005
VILLAGE COMMENTS	11/30/2005
VILLAGE COMMENTS	12/22/2005
VILLAGE COMMENTS	02/10/2006
VILLAGE COMMENTS	03/16/2006

FILE NO. 05-1609
 DATE: 08/27/2005

SHEET 2 OF 2